



FS Data Center Interconnect Product Portfolio

Optimize Your DCI Networks

Contents

Equipment for DCI Networks	3
1. DCP Series	4
2. D7000 Series	6
2.1 Chassis	6
2.2 Muxponder	6
2.3 Erbium-doped Fiber Amplifier	7
2.4 MUX DEMUX & OADM	8
2.5 Optical Protection	9
2.6 Optical Time Domain Reflectometer	9
2.7 Optical Channel Monitor	10
2.8 Raman Amplifier	10
2.9 Coherent Optical Module	10
3. D710 Series	14
4. NX N40 Series	16
4.1 Chassis	16
4.2 Transponders & Muxponders	16
4.3 DWDM Mux/Demux	18
4.4 Open Line System	19
5. M6500 Series	21
5.1 Chassis	21
5.2 Transponders & Muxponders	22
5.3 Management Module	22
5.4 Coherent Transceiver Module	22
6. M6800 Series	24
7. AmpCon-T Network Management	26

I Equipment for DCI Networks

FS DCI Equipment encompasses a wide range of products designed to seamlessly connect data centers, ensuring exceptional availability, scalability, and performance. FS DCI products are tailored to connect data centers regardless of their distance, whether they are just across the road in the same metro region, or across the continent.

Main Benefits

- **Robust Reliability**

FS DCI devices provide network-level reliability to guarantee data center interconnect, while achieving remarkable system uptime and seamless network upgrades with redundant design and maintenance capabilities.

- **Diverse Product Mix**

Wide-ranging product portfolio is ideal for long-haul and large-capacity transmission with a rich set of components like muxponders, EDFA, TFF, OPB, ROADM, OTDR, and OCM, ensuring high performance and adaptability.

- **Flexibility and Scalability**

Rich feature sets of DCI products allow integrated configuration, multi-rate hybrid transmission, efficient operation and maintenance. All provide empower the flexibility and scalability to establish an economical, scalable, and high-efficiency optical network system.

- **Easy-to-use Configuration**

FS DCI devices are easy to deploy and operate, featuring AmpCon-T, a comprehensive management platform, which can realize centralized management, visual monitoring, and service configurations of D7000 series and DCP920 series now (with potential future expansion to manage other DCI products), enhancing efficiency and reducing costs, to provide management optimal for your DCI infrastructure.

DCP Series



[DCP910-D04M](#)

- Zero-Touch Provisioning
- Built-in VMUX, EDFA, TDCM, OCM, OTDR, Dispersion Compensator
- High Speed Multi-protocol Capability to Fit Various Network
- Accept DWDM Signal Format: PAM4 (100G)
- Support WEB for Easy Network Managements
- 1% (2%, 3%, 5% optional) fans Monitor Port Offers Flexible Monitoring ways



[DCP920-D04PA/PB](#)

- Embedded 4x PAM4 QSFP28 Modules, Accepts 4x 100G Base-SR4/LR4/IR4 Modules
- Composed of Mux/Demux, DCM, VOA, TDCM, EDFA and R/B
- Maximizing Fiber Utility with Single-Fiber Bidirectional Transmission
- Automated Configuration and Zero Touch Provisioning
- Simplify Management with AmpCon-T and Web
- Redundant Hot-pluggable 2x AC Power Supply and 3x Fans



[DCP920-D08PA/PB](#)

- Embedded 8x PAM4 QSFP28 Modules, Accepts 8x 100G Base-SR4/LR4/IR4 Modules
- Composed of Mux/Demux, DCM, VOA, TDCM, EDFA and R/B
- Maximizing Fiber Utility with Single-Fiber Bidirectional Transmission
- Automated Configuration and Zero Touch Provisioning
- Simplify Management with AmpCon-T and Web
- Redundant Hot-pluggable 2x AC Power Supply and 3x Fans

DCP Series Feature Highlights

- **Plug-and-play & Rapid Deployment**

Combines Mux/Demux, DCM, EDFA, and other components into one device with completely automatic optical setup.

- **Automated Configuration and One-Click Optimization**

Supports automatic testing and debugging, allowing to automatically perform device parameter testing and adjustment functions with a single click of the button.

- **Visual Management for Precise Operations and Maintenance**

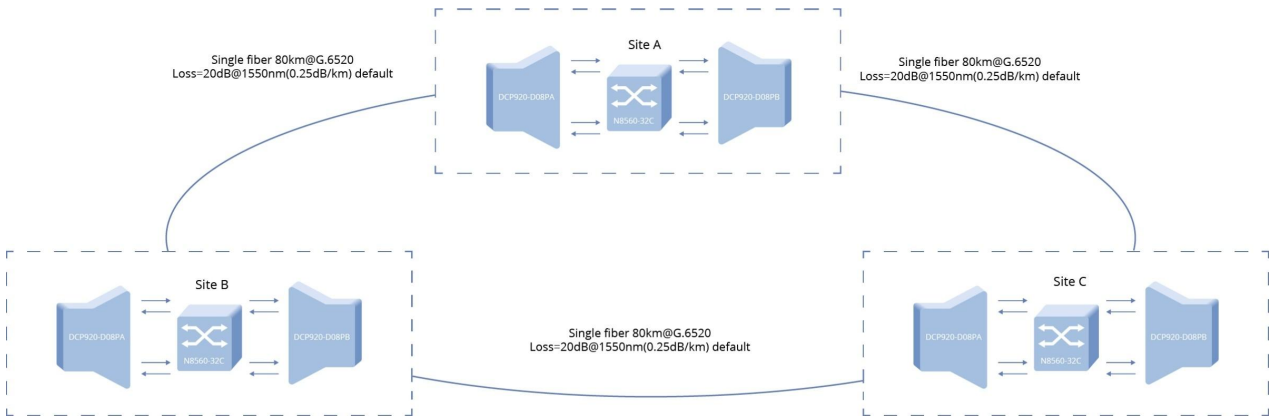
Supports web-based management, reducing the complexity of operations and maintenance.

- **Exceptional Cost-Effectiveness**

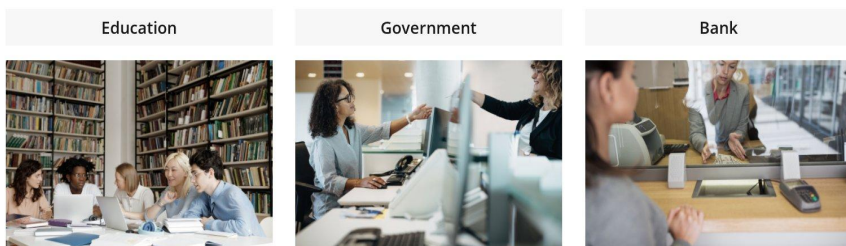
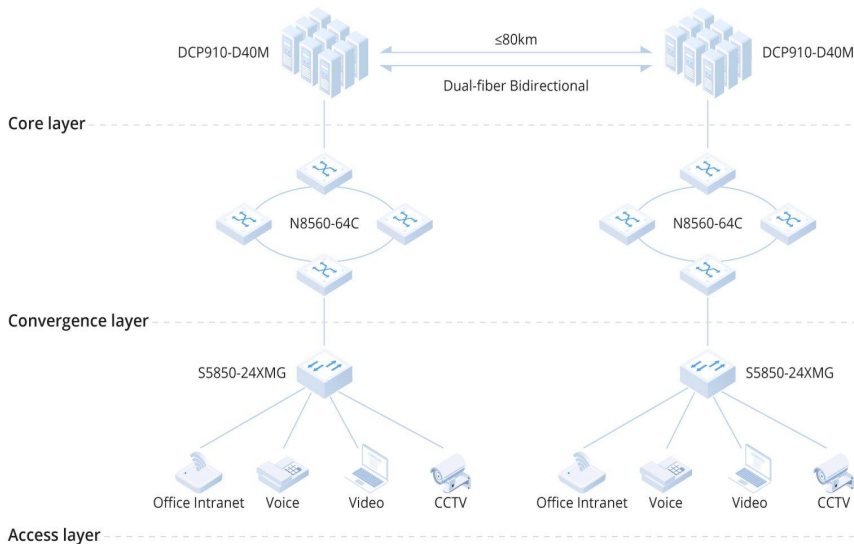
The optimal choice for 100G 0-80km solutions, offering great affordability, reliability, and convenience.

DCP Series Application

[100G DWDM PAM4 Solution](#)—DCP 920 series, featuring EDFA, MUX/DEMUX, and 100G DWDM PAM4 modules, enables swift deployment and stable long-range optical links, reducing costs and operational hassle. With zero-touch provisioning and automatic management, it optimizes operations, facilitates maintenance, ideal for enhancing enterprise productivity and efficiency.



By utilizing 100G PAM4 transceivers and designing a zero-touch, open line system, DCP910 solution is ideally suited for applications such as Data Center Interconnect and Metro Aggregation.



I D7000 Series

2.1 Chassis



[D7000-CH2U](#)

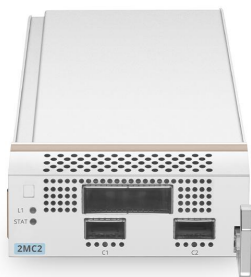
- 8 Slots, 2U 19" Stackable Chassis Unit for DCI Traffic Cards
- Deliver Multiple Rates 10G/100G and 400G
- Up to 400 Gb/s per wavelength for 3.2T Maximum Capacity
- Dual Redundant Backup for NMU and Power Supplies
- Support Optical/Electrical Integration
- Enhance Simple Management through AmpCon-T and WebGUI
- Applied in DCI, Metro, Regional and Long-haul Networks

2.2 Muxponder



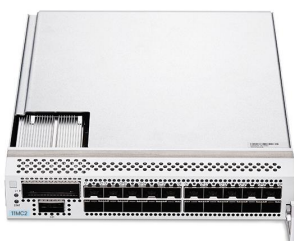
[4MC4](#)

- High Capacity of 400G over Single Card
- Support 400G DP-16QAM Modulation Mode
- Transport 400GE, 100GE, OTU4
- Adjustable FEC to Correct Erroneous Messages
- Support OCP, OMSP and OLP Protection
- Support In-band GCC Management
- Support Performance Monitoring and Alerts
- Low Power Consumption and Small Footprint Requirements



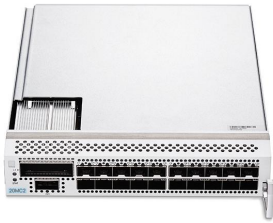
[2MC2](#)

- High Capacity of 200G over Single Card
- Support DP-QPSK/8QAM/16QAM Modulation Mode
- Transport 100GE, OTU4 Services
- Adjustable FEC to Correct Erroneous Messages
- Support OCP, OMSP and OLP Protection
- Support In-band GCC Management
- Support Performance Monitoring and Alerts
- Low Power Consumption and Small Footprint Requirements



[11MC2](#)

- Support 10G/100G Hybrid Transmission on the Client Side
- Support OCP, OMSP and OLP Protection
- Transport 100GE, OTU2/4/2E, 10G WAN/LAN, STM-64, 8-32G FC
- Support DP-QPSK/8QAM/16QAM Modulation Mode
- Support In-band GCC Management
- Support Performance Monitoring and Alerts
- Low Power Consumption and Small Footprint Requirements



[20MC2](#)

- Support Signal Conversion Between 20x 10G and OTUC2
- Support DP-QPSK/8QAM/16QAM Modulation Mode
- Transport 10G WAN/LAN, OTU2/2E, STM-64, 8-32G FC
- Support ALS Function
- Support OCP, OMSP and OLP Protection
- Support In-band GCC Management
- Support Performance Monitoring and Alerts
- Low Power Consumption and Small Footprint Requirements

2.3 Erbium-doped Fiber Amplifier



[OA1825](#)

- Integrated BA and PA with Switchable Optical Gain
- Embedded OSC for Real-time Monitoring
- Built-in VOA Module Supports Adjustable Attenuation
- Support MON Port Monitoring Access (0.5% Split Ratio)
- Support OTDR Monitoring Access
- MUX Port Can Manage D7000 Mux/Demux



[OA1835](#)

- Integrated BA and PA with Switchable Optical Gain
- Embedded OSC for Real-time Monitoring
- Built-in VOA Module Supports Adjustable Attenuation
- Support MON Port Monitoring access (0.5% Split Ratio)
- Support OTDR Monitoring Access
- MUX Port Can Manage D7000 Mux/Demux



[OLA2525](#)

- Integrated Dual LA with Switchable Optical Gain
- Embedded OSC for Real-time Monitoring
- Built-in VOA Module Supports Adjustable Attenuation
- Support MON Port access (0.5% Split Ratio)
- Support OTDR Monitoring Access

2.4 MUX DEMUX & OADM



[OMD48ECM](#)

- IL<6dB, 100GHZ DWDM AAWG Technology
- Multiplexes up to 48 Channels on a Fiber Pair
- RJ45 Port Used for Monitoring and Control MUX
- Compliant with All-Optical Networking Products (ITU Grid)
- High Density, High Integration, Easy Installation
- Exceptional Reliability and Stability



[ROADM-09T](#)

- Bi-directional 9-port Flexible Grid Wavelength Selector Switch
- Support for CDC-F Switching
- Built-in OA for ROADM Insertion Loss Compensation
- Support MON Port Access (1% Split Ratio)
- Support OTDR Monitoring Access
- MUX Port Can Manage D7000 Mux/Demux



[TFF04](#)

Customized 4CH DWDM OADM

- High Level of Integration by Plug-in Design
- Expansion Port for Increasing Capacity
- Embedded VOA to Achieve Power Adjustment
- Passive Transparent Any Rate, Any Service Multiplexing
- Compliant with All Optical Networking Products (ITU Grid)
- Support Power Monitoring of Each Channel Input Port
- Support the Industrial Temperature for Extended Application

2.5 Optical Protection



[OPB2-1](#)

- Provide 2 Independent 1+1 Protection Groups
- Support Manual Switching and Automatic Switching
- Support Auto and Non-auto Reversion Working Modes
- Support Relative and Absolute Threshold Modes
- Switching Speed is Lower than 50ms, Ultra-fast Recovery



[OPB2](#)

- Support Manual Switching and Automatic Switching
- Support Auto and Non-auto Reversion Working Modes
- Support Relative and Absolute Threshold Modes
- Switching Speed is Lower than 50ms, Ultra-fast Recovery

2.6 Optical Time Domain Reflectometer



[OTDR08](#)

- Support 8-channel OSW Dynamic Switching Test Port
- Support Fiber Link Attenuation and Breakpoint Testing
- Support Online Detection, Forward and Reverse Detection
- Low Power Consumption, Small Size

2.7 Optical Channel Monitor



[OCM08](#)

- Support 8-channel OSW Dynamic Switching Test Port
- Support Optical Signal Wavelength and Power Monitoring
- Support Wavelength Monitoring up to 96ch (@50GH)
- Low Power Consumption, Small Size

2.8 Raman Amplifier



[PDRA5014](#)

Counter-propagating Distributed

- Up to 14dB Average Gain for G.652 Fiber
- Distributed Raman Amplification with Low Noise Figure
- Dual AC Pluggable Power Supply and Pluggable Fan Unit
- Support WebGUI, AmpCon-T Management
- Support Up to 80 DWDM Wavelengths
- Pump Polarization-independent Design
- Suitable for Long-span or High-speed Optical Transmission



[BDRA5008](#)

Co-propagating Distributed

- Up to 8dB Average Gain for G.652 Fiber
- Distributed Raman Amplification with Low Noise Figure
- Dual AC Pluggable Power Supply and Pluggable Fan Unit
- Support WebGUI, AmpCon-T Management
- Support Up to 80 DWDM Wavelengths
- Pump Polarization-independent Design
- Suitable for Long-span or High-speed Optical Transmission



[DRA5000](#)

Customized Distributed

- Distributed Raman Amplification with Low Noise Figure
- Dual AC/DC Pluggable Power Supply and Pluggable Fan Unit
- Support WebGUI, AmpCon-T Management
- Support Up to 80/96 DWDM Wavelengths
- Pump Polarization-independent Design
- Suitable for Long-span or High-speed Optical Transmission

2.9 Coherent Optical Module



[CFP2-DCO-200G-D](#)

- PM-16QAM/PM-8QAM/PM-QPSK Modulation Formats
- Support Wavelength and Power Tunable
- Compliant with CFP2 MSA, CFP MSA
- Digital Optical Monitoring Capability for Strong Diagnostic Capabilities
- Class 1 Laser Safety, Support Hot-pluggable and LLDP



[CFP2-DCO-400G-D](#)

- PM-16QAM/PM-8QAM/PM-QPSK Modulation Formats
- Support Wavelength and Power Tunable
- Compliant with CFP2 MSA, CFP MSA
- Digital Optical Monitoring Capability for Strong Diagnostic Capabilities
- Class 1 Laser Safety, Support Hot-pluggable and LLDP

D7000 Series Feature Highlights

- **Ultra-High Network Bandwidth**

Supports high-speed transmission at 200G/400G, with a single fiber capacity of up to 25.6T, enhancing fiber utilization and reducing fiber investment.

- **Optical and Electrical Integration**

Integrated optical and electrical components in one frame, offering high device integration, space-saving benefits, and easy Deployment.

- **Multiple Service Type Support**

Supports a wide range of services, including 10G WAN/LAN, 100G/400GE, STM-64, 8G~32G FC, OTU2e, OTU2, and OTU4, offering flexible network transmission solutions.

- **AmpCon-T Intelligent Operations and Maintenance**

Achieve centralized management, visual monitoring, and service configurations of D7000 series, enhancing efficiency and reducing costs.

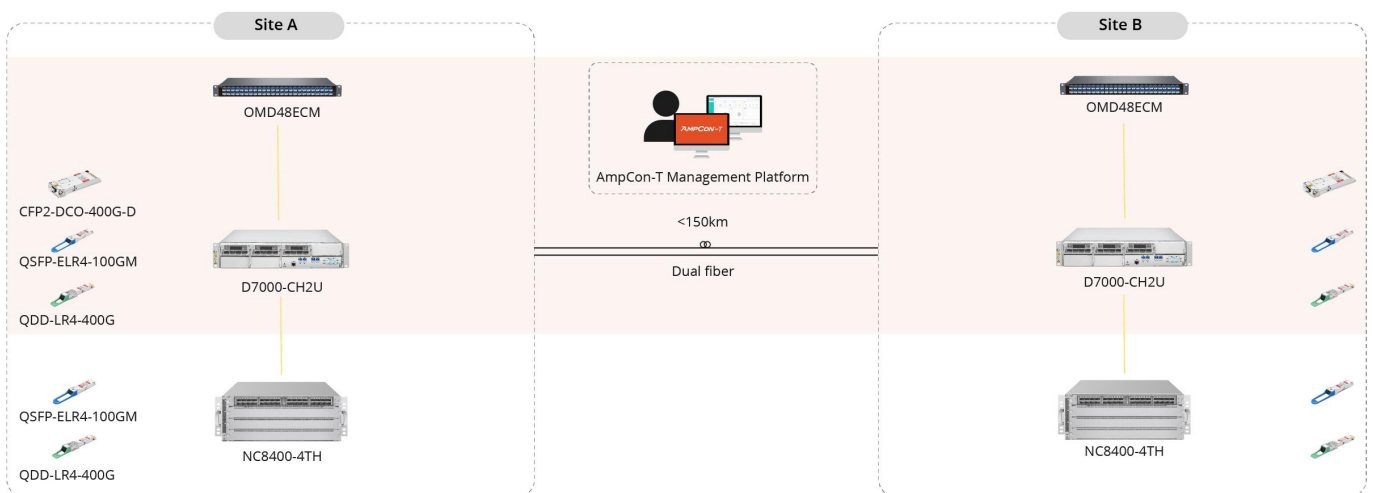
- **High Reliability for Continuous Performance**

Provide redundant power and main control protection for healthy operation, millisecond-level switching for diverse service protection, and rapid fiber fault diagnosis with timely alerts.

I D7000 Series Application

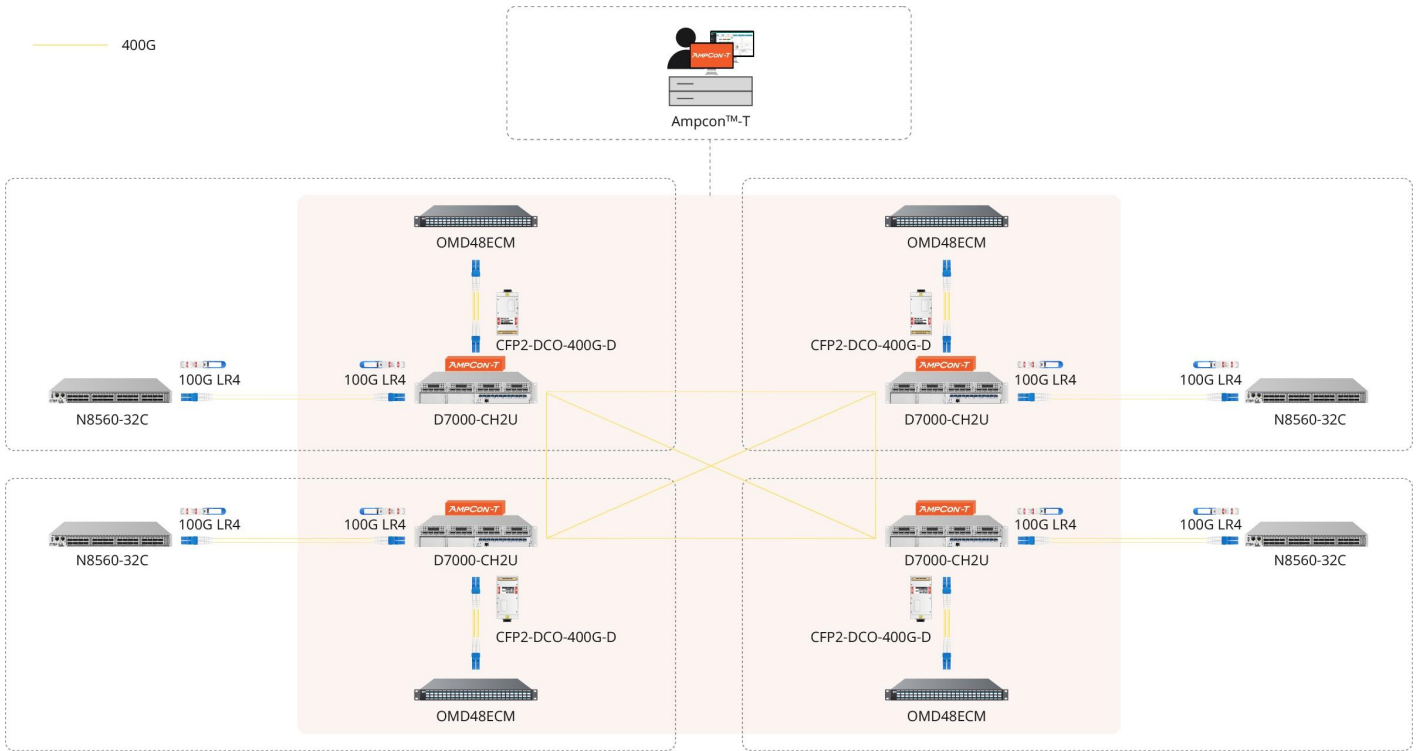
1. Building 400G DCI Networks with D7000 Series

FS 400G DCI solution uses the D7000 series for streamlined point-to-point networking. It supports 100GE, 400GE, and OTU4 services. With a 400G single-wavelength transmission rate, it can deliver up to 19.2T per fiber.



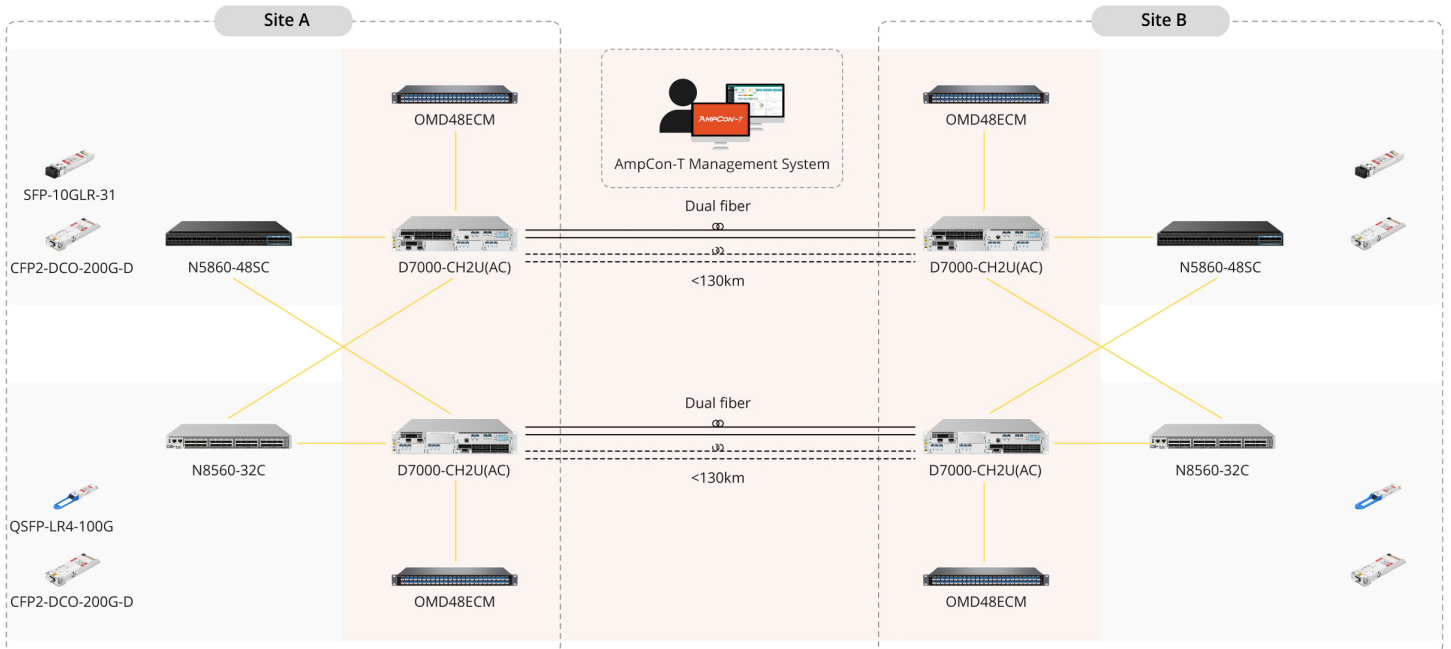
2. Upgrade Your Metropolitan Network with D7000 Mesh ROADM Solution

FS provides a metropolitan mesh ROADM solution that simplifies wavelength deployment and ensures a scalable network infrastructure. Supporting line rates up to 400G and single-fiber capacity of 19.2T, it meets the demands of modern optical networks.



3. Data Center Disaster Recovery Solution for Optical Networks

To meet these stringent requirements, data centers must be equipped with robust DR capabilities. FS offers data center disaster recovery solutions that ensure rapid recovery in the event of a disaster. By leveraging our solutions, businesses can maintain continuity even in the face of natural disasters or power failures.



I D710 Series



[18M2C2 \(AC\)](#)

- High Capacity Platform in 1U
- Flexible 10/40/100GbE Interface Speeds
- Support AES-256 Encryption at Layer 1 Ensuring Data Security
- Support In-band DCN Management
- Provide OCH1+1 and ODUK SNCP Protection
- Adjustable FEC to Correct Erroneous MessagesMonitoring ways
- Support Flexible Service Scheduling and Forwarding



[18M2C2 \(DC\)](#)

- High Capacity Platform in 1U
- Flexible 10/40/100GbE Interface Speeds
- Support AES-256 Encryption at Layer 1 Ensuring Data Security
- Support In-band DCN Management
- Provide OCH1+1 and ODUK SNCP Protection
- Adjustable FEC to Correct Erroneous MessagesMonitoring ways
- Support Flexible Service Scheduling and Forwarding



[CFP2-DCO-200G-D71](#)

- CFP MSA CFP2 Compliance
- Support Up to 200Gbit/s Transmission
- 80km Maximum Transmission Distance
- Low Power Consumption $\leq 24W$
- DP-16QAM Modulation Format
- Metal Package with Excellent EMC Performance
- Class 1 Laser Safety, RoHS Compliant
- Support Hot-pluggable and DDM

D710 Series Feature Highlights

- **200G OTN Transport Platform in 1U**

Supporting AES-256 Encryption at Layer 1, it meets the demands of enterprise DCI and metro networks for rack space savings and high capacity applications.

- **Multi-rate Ports for Link Transmission and Setup**

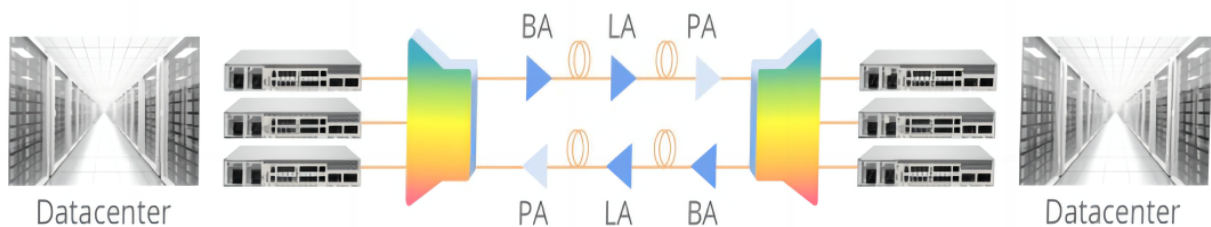
The line side supports CFP2 modules for 2x100G OTU4 or 1x200G services, while the client side supports 10G/40G/100G Ethernet, OTU4/OTU2/OTU2e OTN, STM-64 SDH and 8G/10G/16G/32G FC services.

- **Stable DCN Management Network**

In a DCN, SDH overhead DCC bytes provide physical channels for management, eliminating the need for private channels and significantly reducing network construction costs.

I D710 Series Application

Point-to-point long distance transmission delivers high-bandwidth optical transmission for Data Centers. Combined with 40ch mux/demux and BA, LA, PA to amplify signal, it can support 40x 100G/200G hybrid systems.



NX N40 Series

4.1 Chassis



① ② Slots for NX N40 Series Modules

[NX N40](#)

- Support up to 100-400 Gbps Per Wavelength for 6.4Tbps Capacity
- 8 Slots, 2U 19" Stackable Chassis Unit for DCI Traffic Cards
- No Slot Restrictions, Flexible Matching of Optical Layer and Electrical Layer Boards
- 4 Ethernet Ports, Support 10 Sub-Frame Cascade Applications, Reduce OPEX
- Support LLDP, TACAS and RADIUS to Ensure Network Security
- Dual Redundant Power Supplies and Smart Fans to Ensure Non-stop Reliable Operation

4.2 Transponders & Muxponders



[MXP400G-14E](#)

- High Capacity Transport of 400G over Single Wavelength
- Reduce Recurring Costs with Low Power Consumption and Small Footprint Requirements
- Super-FEC to Correct Erroneous Messages, Offering High Degree of Fault Tolerance
- Support 16QAM Modulation for the Highest Capacity at Any Distance
- Support 1+1 Line Protection and Optical-layer Protection



[MXP200G-210](#)

- Massive Capacity and Density, 400 Gb/s of Line Capacity Plus 400Gb/s of Client Ports
- Support Mixed Client Traffic (from 10G to 100G) on a Single Wavelength
- Reduce Recurring Costs with Low Power Consumption and Small Footprint Requirements
- Super-FEC to Correct Erroneous Messages, Offering High Degree of Fault Tolerance
- Support QPSK and 16QAM Modulation for the Highest Capacity at Any Distance



[MXP200G-204](#)

- Massive Capacity and Density, 400 Gb/s of Line Capacity Plus 400 Gb/s of Client Ports
- Reduce Recurring Costs with Low Power Consumption and Small Footprint Requirements
- Super-FEC to Correct Erroneous Messages, Offering High Degree of Fault Tolerance
- Support QPSK, 8QAM and 16QAM Modulation for the Highest Capacity at Any Distance
- Support 1+1 Line Protection and Optical-layer Protection



[MXP400G-202](#)

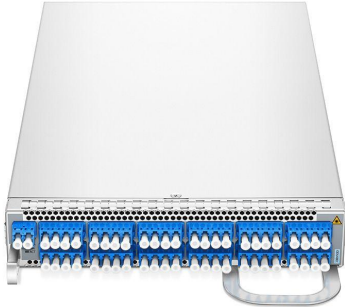
- Massive Capacity and Density, 800 Gb/s of Line Capacity Plus 800 Gb/s of Client Ports
- Reduce Recurring Costs with Low Power Consumption and Small Footprint Requirements
- Super-FEC to Correct Erroneous Messages, Offering High Degree of Fault Tolerance
- Support QPSK, 8QAM and 16QAM Modulation for the Highest Capacity at Any Distance
- Support 1+1 Line Protection and Optical-layer Protection



[MXP400G-104](#)

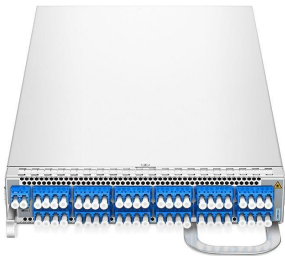
- High Capacity Transport of 400G over Single Wavelength
- Reduce Recurring Costs with Low Power Consumption and Small Footprint Requirements
- Super-FEC to Correct Erroneous Messages, Offering High Degree of Fault Tolerance
- Support 8QAM and 16QAM Modulation for the Highest Capacity at Any Distance
- Support 1+1 Line Protection and Optical-layer Protection

4.3 DWDM Mux/Demux



[ODU48EC](#)

- Demultiplexing of up to 48 Even Channels on Fiber Pair to Maximize Using of Existing Fiber
- Low Insertion Loss: Max 5.5dB
- Protocol Transparent Any Rate, Any Service Demultiplexing
- Compliant with All-Optical Networking Products (ITU Grid)
- Support Optical Power Detection, and Performance Alarm and Reporting
- Support FCP NX SDN Management for Remote Management
- Unified Management on SDN, Utilized in Large-capacity Transmission in All Scenarios



[VMU48EC](#)

- Multiplexing of up to 48 Even Channels on Fiber Pair to Maximize Using of Existing Fiber
- Optical Power in Each Channel Can Be Adjusted Using a Built-in Variable Optical Attenuator
- Protocol Transparent Any Rate, Any Service Multiplexing
- Compliant with All-Optical Networking Products (ITU Grid)
- Support Optical Power Detection, and Performance Alarm and Reporting
- Support FCP NX SDN Management for Remote Management
- Unified Management on SDN, Utilized in Large-capacity Transmission in All Scenarios



[OMD08](#)

Customized Mux Demux

- Multiplexing of up to 8 Even Channels on Fiber Pair to Maximize Using of Existing Fiber
- Protocol Transparent Any Rate, Any Service Multiplexing
- Compliant with All-Optical Networking Products (ITU Grid)
- Support Optical Power Detection, and Performance Alarm and Reporting
- Unified Management on SDN, Utilized in Large-capacity Transmission in All Scenarios

4.4 Open Line System



[OPB-I](#)

- Provides 2 Independent 1+1 Protection Groups, including OCP 1+1, OMSP 1+1, OLP 1+1
- Switchover Time is Lower than 5ms, Ultra-fast Recover, Reduce Interrupt Time
- With Built-in OPM, Support Real-time Power Monitoring
- Performance Monitoring and Alerts Provide Visual Check of the Status of the Card
- Unified Management on SDN, Utilized in Large-capacity Transmission in All Scenerios



[ODA3224-V](#)

- Support Bidirectional Amplification, Boosting Signals and Improving Coverage
- Built-in VOA Module Can Fast Adjust Optical Power to Realize 22-32dB Variable Gain
- Embedded OSC for Real-time Monitoring to Ensure Normal Operation of the Network
- Embedded OPM for Detection and Reporting of Optical Power
- Supports Amplifying Multiple Wavelengths over Several Hundred Kilometers
- Performance Monitoring and Alerts Provide Visual Check of the Status of the Card
- Support FCP NX Management for Flexible Operation
- Unified Management on SDN, Utilized in Large-capacity Transmission in All Scenerios

NXN40 Series Feature Highlights

- **2U Platform for DCI Transmission**

Carry MUX/DEMUX/MUXPONDER/EDFA/OLP for minimal rack space to achieve DCI transmission.

- **6.4T Superior Performance**

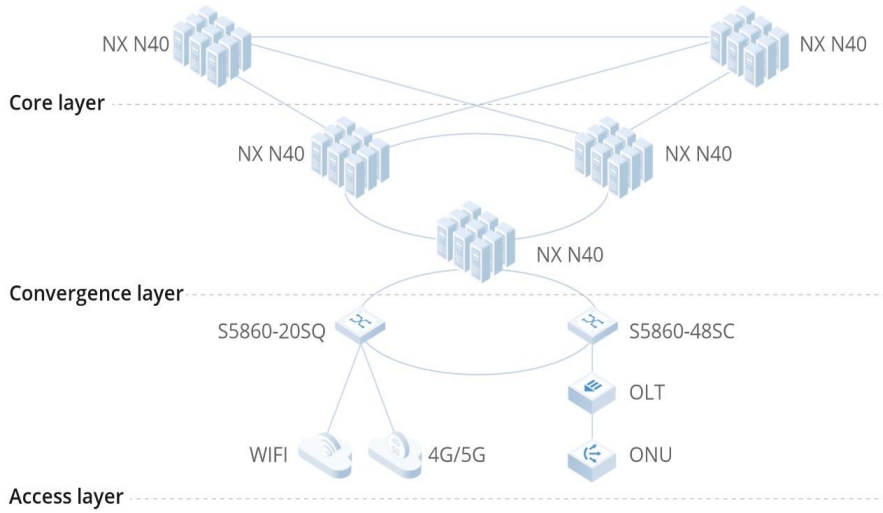
400G per wavelength yielding a total of 6.4T capacity to efficiently support a broad range of customer requirements and network applications.

- **Visualize WebUI Management**

Check important data, alarms, reports through FCP NX management anytime on-site or remotely.

NX N40 Series Application

The NX N40 series is suitable for the convergence and core layer in the Data Center Interconnect to access services, implementing the fast and flexible deployment of the transport network.



Finance

Internet

Universities

M6500 Series

5.1 Chassis



[M6500-CH2U](#)

- Support 100G/200G High Speed and Large-capacity OTN Transmission
- Host Up to 2x Single Slot M6500 Series Line Cards
- Massively Scalable 2x SFP LAN Ports and 2x RJ45 LAN Ports
- Support OSC and ESC for Monitoring Optical and Electric Signal Performance
- Enable Simplified Operations with WEB and SNMP
- Left-to-Right Airflow
- Offer Field-replaceable Units, Ensuring no Service Impact during Failure



[M6500-CH5U](#)

- Redundant Hot-pluggable 2x DC Power Supply Units and 1x Fan Module
- Host Up to 10x Single Slot M6500 Series Line Cards
- Massively Scalable 2x SFP LAN Ports and 2x RJ45 LAN Ports
- Support OSC and ESC for Monitoring Optical and Electric Signal Performance
- Enable Simplified Operations with WEB and SNMP
- Left-to-Right Airflow
- Offer Field-replaceable Units, Ensuring no Service Impact during Failure

5.2 Transponders & Muxponders



[M6500-TMXP5](#)

- Transport 10G/40G/100G Ethernet, SDH STM-64/256, 10G Fiber Channel, SDI, etc
- ITU G.709 FEC and SD-FEC Error Correction
- Support Standard MSA Pluggable QSFP+, QSFP28 and CFP2
- Remote Management with WEB
- High Capacity DCI for Enterprise, Campus and Cloud Computing Networks
- Comprehensive Performance Monitoring and Full OTN Managed Layer

5.3 Management Module



[M6500-5UNMU](#)

- 2x SFP LAN Ports 1000Base-X , 2x RJ45 LAN Ports 10/100/1000Base-T
- Hot Swap, Easy Insertion and Removal
- Remote Monitoring, Configuration and Alarm
- WEB, SNMP v2 Management
- Support WDM, OTN, PDH Systems

5.4 Coherent Transceiver Module



[M-CFP2-DCO](#)

- Choose between 100G QPSK, 200G 8-QAM, 200G 16-QAM by Software Actuation
- Support Up to 80km over SMF
- SD FEC/G.709 FEC Enables Interoperability with non CFP2-DCO Based IPODWDM Products
- Both the DSP and the Transceiver Module Reside in the Compact Digital CFP2 Pluggable
- High-bandwidth, Line-side DWDM Transmission for Telecom and Data Center Applications

M6500 Series Feature Highlights

- **Multirate Hybrid Multiplexing**

Support a flexible mix of 10G, 40G, and 100G services in operation modes, combining different protocols and rates over a single 200G uplink.

- **WEB Management**

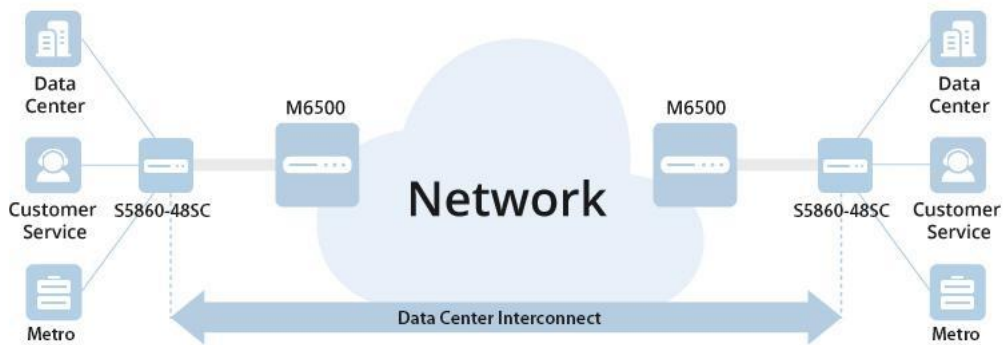
Check important data, alarms, reports through WEB management anytime on-site or remotely.

- **Long-distance Transmission**

Deliver carrier-grade high-end solutions capable of serving up to 200Gb Ethernet, enterprise, and DCI networks.

M6500 Series Application

M6500 series is a 10G/40G/100G high-capacity OTN transmission system, which is mainly applied to backbone line, metro network, and data center interconnection transmission. It supports high-capacity OTN scheduling capability, 10G/40G/100G transmission, and rich management and protection, which enables to build an end- to-end OTN/WDM backbone transmission solution for operators, and realizes high-capacity scheduling and ultra-broadband intelligent transmission.



M6800 Series



[M6800-TSP16](#)



[M-CFP2-DCO](#)

- Transport 100G Ethernet in 1U Chassis
- ITU G.709 FEC, RS-FEC and SD-FEC Error Correction
- Support Standard MSA Pluggable QSFP28 and CFP2
- High Capacity, 16 x 100GbE Managed Service Platform
- Support WEB, SNMP v2 management
- Support 1+1 Power Protection, Improving the Reliable Transmission
- High Capacity DCI for Enterprise, Campus and Cloud Computing Networks
- Choose between 100G QPSK, 200G 8-QAM, 200G 16-QAM by Software Actuation
- Support Up to 80km over SMF
- SD FEC/G.709 FEC Enables Interoperability with non CFP2-DCO Based IPODWDM Products
- Both the DSP and the Transceiver Module Reside in the Compact Digital CFP2 Pluggable
- High-bandwidth, Line-side DWDM Transmission for Telecom and Data Center Applications

M6800 Series Feature Highlights

- **1.6T High Capacity Platform in 1U**

Used in enterprise DCI and metro networks for rack space savings and high capacity applications, delivering up to 1.6T in a 1U chassis.

- **High Transmission Capacity**

Increase the transmission capacity, rack space savings, and reduce fiber occupation by connecting with MUX/DEMUX.

- **Smart Fans and Power Supplies**

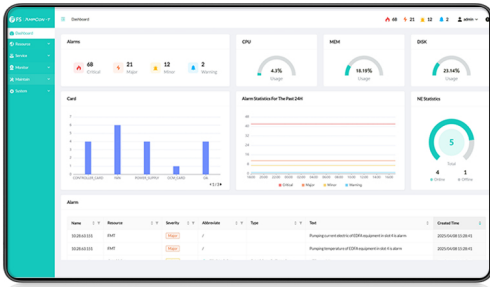
2+1 intelligent fans achieve superior cooling and power reduction. 1+1 dual power supplies can be removed or replaced without downtime.

M6800 Series Application

M6800 Series is suitable for Ultra-long-distance Transmission. This muxponder equipped with a DSP chip can achieve ultra-long-distance transmission, suitable for DCI, cloud providers, colocation providers, and high-capacity applications.



AmpCon-T Network Management



- Real-time Data Visualization Enhances Network Monitoring and Operating Efficiency
- Support Network Telemetry Reduces Fault Handling Time
- Facilitate Flexible Configuration with Differentiated Service Options
- Link Measurement Improves Fault Troubleshooting Efficiency
- Scheduled Backups and Upgrades

[LIS-AMPCON-T-F](#)

AmpCon-T Feature Highlights

- **Real-time Data Visualization**

Offer real-time insights into system status and performance and allow for efficient discovery, monitoring, and configuration of links.

- **All-in-one Monitoring**

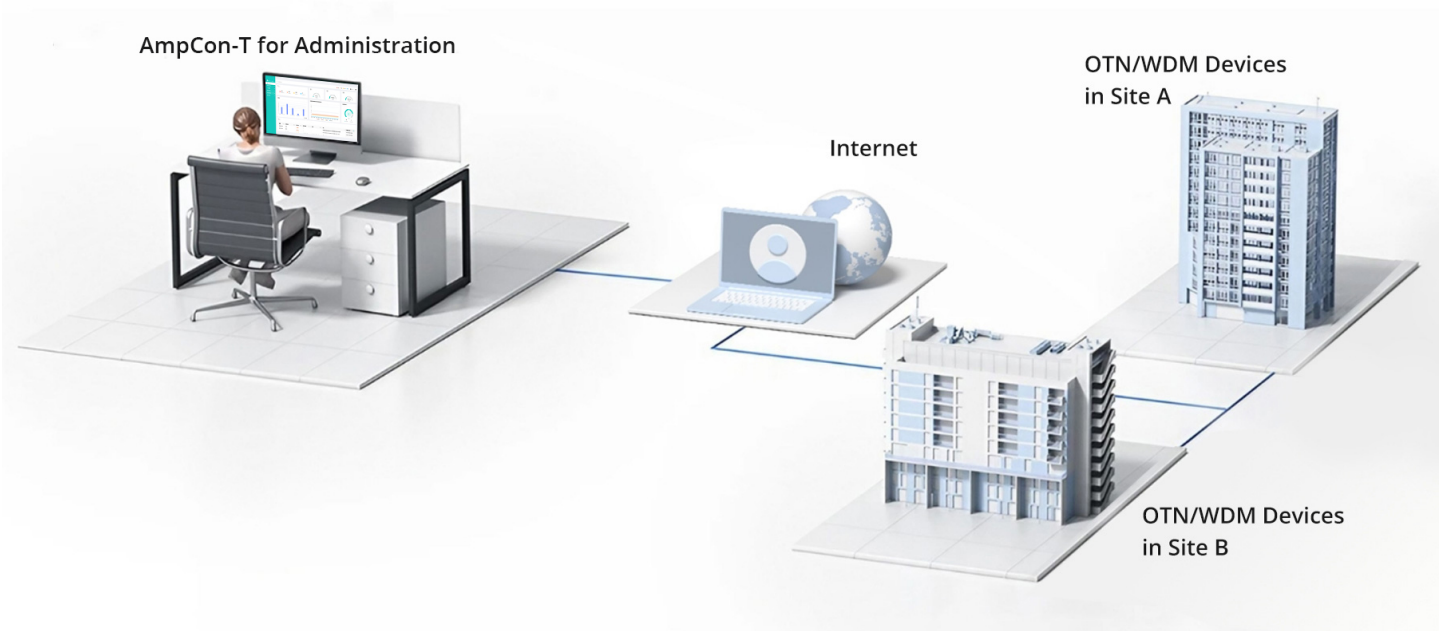
Achieve efficient operation monitoring and stable system operation with centralized monitoring of entire system.


- **Flexible Configuration**

Support L0, L1, and E2E service configuration, enabling maintenance to create, delete, and edit services on relevant devices.

AmpCon-T Network Management Application

[AmpCon-T Network Management Solution](#) quickly integrates ICT devices into the network management system for centralized management of OTN/WDM devices, improving network management efficiency and saving costs.





Shenzhen (China)

Address: 24F, Yingfeng Center, Haitian 2nd Rd,
Nanshan District, Shenzhen
Tel: +86 (755) 8357 1351
Email: sales@feisu.com

Delaware (United States)

Address: 380 Centerpoint Blvd, New Castle,
DE 19720, United States
Tel: +1 (888) 468 9910
Email: us@fs.com

Munich (Germany)

Address: NOVA Gewerbepark Building 7, Am
Gfild 7,85375 Neufahrn bei Munich, Germany
Tel: +49 (0) 8131 377 3008
Email: de@fs.com

Singapore

Address: 30A Kallang Pl, #11-10/11/12 Singapore
339213
Tel: +65 3138 1992
Email: sg@fs.com

Wuhan (China)

Address: 9-14F, Optical Valley Software Park
A7, Guanshan Ave, Wuhan
Tel: +86 (027) 8808 9195
Email: sales@feisu.com

Birmingham (United Kingdom)


Address: Regus Edmund House, 12-22 Newhall
Street, Birmingham, B3 3AS
Tel: +44 (0) 121 726 4775
Email: uk@fs.com

Melbourne (Australia)

Address: 57-59 Edison Rd, Dandenong South,
VIC 3175, Australia
Tel: +61 3 5909 9990
Email: au@fs.com

Tokyo (Japan)

Address: JS Progress Building, 4-1-23 Heiwajima,
Ota-ku, Tokyo 〒143-0006
Tel: +81 3 6897 9438
Email: jp@fs.com



FS has several offices around the world. Addresses, phone numbers are listed on the FS Website at https://www.fs.com/contact_us.html
FS and FS logo are trademarks or registered trademarks of FS in the U.S. and other countries.