

Case Study

Enterprise LAN

FS PicOS® Switches Enhance Network Stability for Canadian Digital Media

FS provided technical support to help a Canadian digital media and enterprise communications company solve the difficulties in network equipment compatibility, scalability and management. By providing PicOS® switches and customized DACs, a strong network architecture was built to meet the needs of future 100G network.

FS PicOS® Switches Enhance Network Stability for Canadian Digital Media

Country

Canada

Industry

Sports, Media and Entertainment

Network Type

Small Campus Network

Solutions

Enterprise LAN

Highlights

- Professional technical support is offered, including network topology that facilitates the intuitive understanding of network solution design.
- The unified PicOS® operating system simplifies configuration process and helps the client significantly reduce operational expenditures.
- Choosing PicOS® PoE switches compatible with existing equipment ensures quick installation and stable operation of the network.
- The network architecture is flexible and scalable, meeting current needs while ensuring smooth adaptation to new developments.

Key Stats

- The 24-port multi-gigabit PoE switch has 10G ports for connecting Wi-Fi devices and 4x 10G/25G uplink ports for connecting servers.
- PicOS® has comprehensive L2/L3 features to ensure network stability and availability.
- The network architecture carefully designed by FS professional technical team is prepared for future 100G requirements.

“Thank you for reviewing our quote, confirming the DAC cable information and recommending the right PoE switch to ensure everything is compatible.”

Ethan Raymond
Infrastructure Operations Lead



Overview

A Canadian client specializes in providing virtual collaboration solutions and unified visual communication solutions for higher education institutions and global enterprises. This industry requires robust and stable network infrastructure to support various communication and collaboration functions, ensuring seamless information exchange and efficient user collaboration.

They are in the process of setting up their office network and already have some Dell switches in place. However, they are uncertain about which other network devices to choose. The client aims to procure FS enterprise switches that are compatible with their existing Dell servers to ensure stable connections.

Challenges

At the beginning of the project, the client lacked sufficient understanding of the PicOS® system. The FS technical team provided detailed training materials and remote guidance, which enabled the client to quickly respond to and solve problems, helping the client gradually become familiar with the new system and understand the efficient and convenient deployment of PicOS® PoE switches.

When selecting the switch, the client required that the newly added network equipment must be fully compatible with the existing Dell servers and switches to ensure smooth communication and data transmission between different network devices and ensure the stability and reliability of the entire network.

In addition, as business grows and office network needs evolve, the client required that the network equipment should support scalability and flexibility so that network capacity can be easily expanded by adding new equipment or upgrading existing equipment to meet future development needs.

Solutions

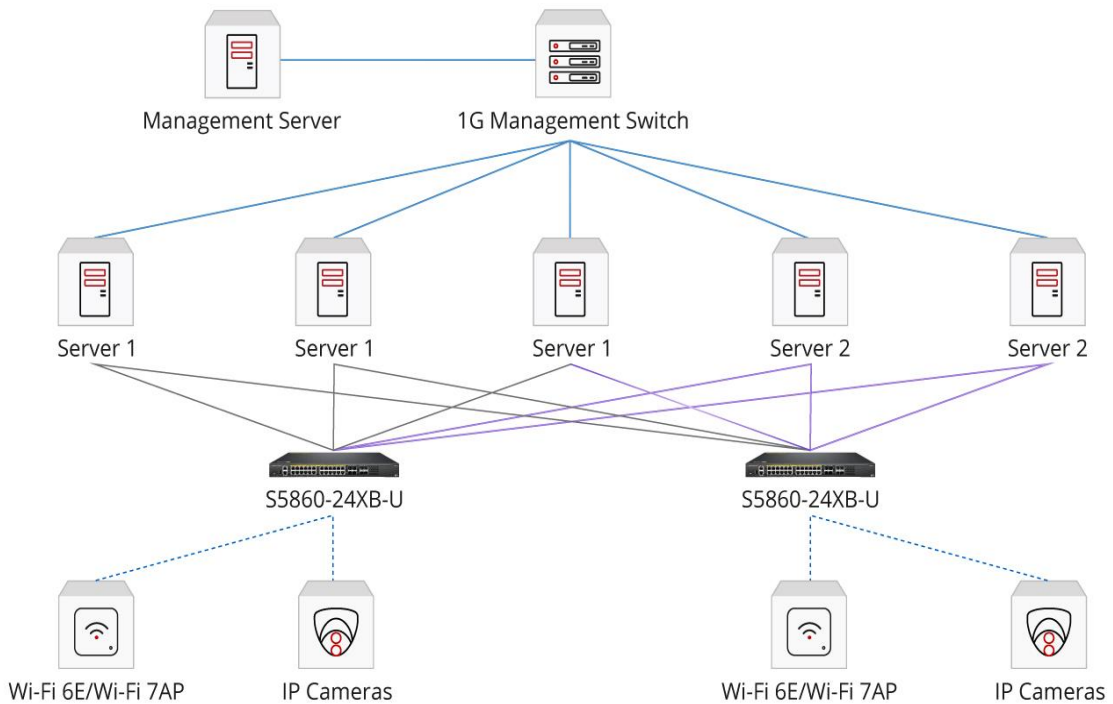
FS technicians learned that the client company had deployed two types of Dell servers and had a 1G management switch used as out-of-band to allow the five servers to communicate with the management server. Based on this, the client wanted to purchase compatible FS PicOS® PoE switches to connect office equipment. Through in-depth research on different models of FS enterprise switches and screening based on key indicators such as compatibility, performance, stability and scalability, FS technicians recommended S5860-24XB-U and S5860-48XMG-U PicOS® switches. To ensure good network compatibility, customized DACs are used to ensure stable connections between devices and provide hardware foundation for efficient network operation.

Based on the actual port requirements, the user ultimately selected the S5860-24XB-U PoE++ switch. This switch is equipped with 24 10GBASE-T/Multi-Gigabit ports, 4 10Gb SFP+ ports, and 4 25Gb SFP28 uplink ports, whose port configuration is diversified and perfectly matches the user's connection requirements. Moreover, it can be connected to Wi-Fi 6E and Wi-Fi 7 APs, providing strong support for future business expansion. In addition, considering office monitoring, it can also be connected to IP cameras to achieve device and scenario adaptation and meet the user's multi-aspect usage requirements.

Results

FS has helped the media network achieve remarkable outcomes by assisting with product selection and network setup guidance. Network stability has been significantly enhanced by ensuring device compatibility, effectively preventing connection failures. Through appropriate switches, network performance has been optimized, meeting the current connectivity requirements and boosting work efficiency. Additionally, after purchasing the 10G PicOS® switch, FS has identified the client's potential future need for 100G technology. This foresight has greatly increased the client's recognition of the value of FS's solutions.

- 25G SFP28 DAC
- 10G SFP DAC
- 1G RJ45
- 10G RJ45





United States

Address: 380 Centerpoint Blvd, New Castle, DE 19720, United States

Tel: +1 (888) 468 7419

Email: US@fs.com

For more information, welcome to visit www.fs.com

Copyright © 2009-2025 FS.com Inc. All Rights Reserved.