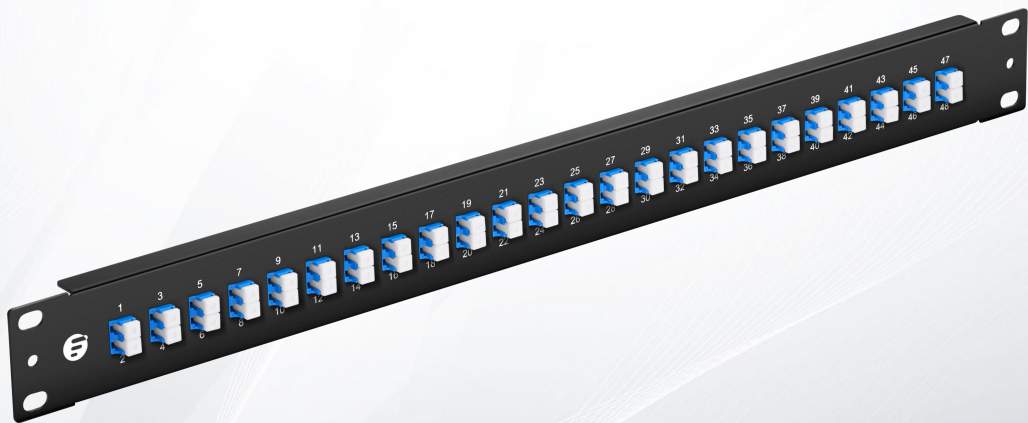
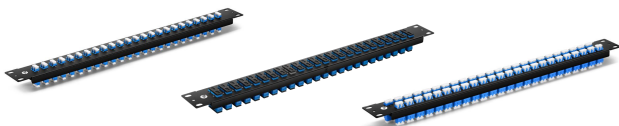


FHU 1U Fiber Patch Panel



Description

FS FHU series 1U 19" fiber patch panel pre-equipped with either LC or SC connectors to offer an economical, high-density fiber termination solution that doesn't take up much space. These ultra-compact patch panels mount easily in any standard 19" rack or cabinet to provide efficient and easy management of fiber optic cables, it is easy to install solution for fiber optic cross-connections.



Features

- Mount to standard EIA 19" rack rails.
- Available with either single mode or multimode connectors to accommodate the specific requirements of your network infrastructure.
- Each port is individually numbered for fast and easy identification.
- Constructed from high-quality steel to provide maximum strength and durability.
- High performance connectors to achieve a low loss optical budget.
- Adapter housing colors follow TIA/EIA-568-C.3 suggestion, easy identification of fiber type via adapter colors.

Product Specifications

I. Product Constructions

No. of Rack Space	1U
Dimensions (HxW)	1.73"x19" (44x482.6mm)
Material of Plate	1.5mm SPCC (Black Coating)
Adapter Type	LC/SC
Polish Type	SMF: UPC-UPC MMF: UPC-UPC
Adapter Color	Green(APC), Blue (SM UPC), Aqua (OM3/OM4)
Split Sleeve	Zirconia Ceramic

II. Product Information

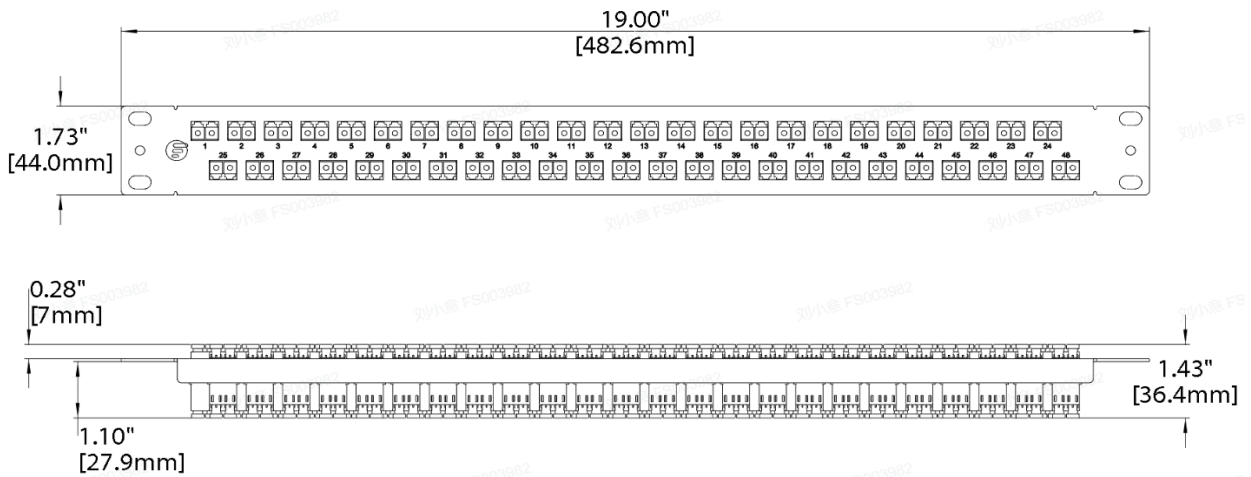
Adapter Type	LC Duplex	SC Duplex
Number of Adapters	24/48	24
Fiber Count	48/96 Fibers	48 Fibers
Fiber Mode	Single Mode: OS2 9/125 μ m Multimode: OM4/OM3 50/125 μ m	Single Mode: OS2 9/125 μ m Multimode: OM4 50/125 μ m
Insertion Loss	≤ 0.2 dB (0.1dB Typ.)	≤ 0.2 dB (0.1dB Typ.)
Return Loss	≥ 50 dB	≥ 50 dB

Standards Compliance

- ISO9001 Certificate
- RoHS Compliant

Layout and Dimensions

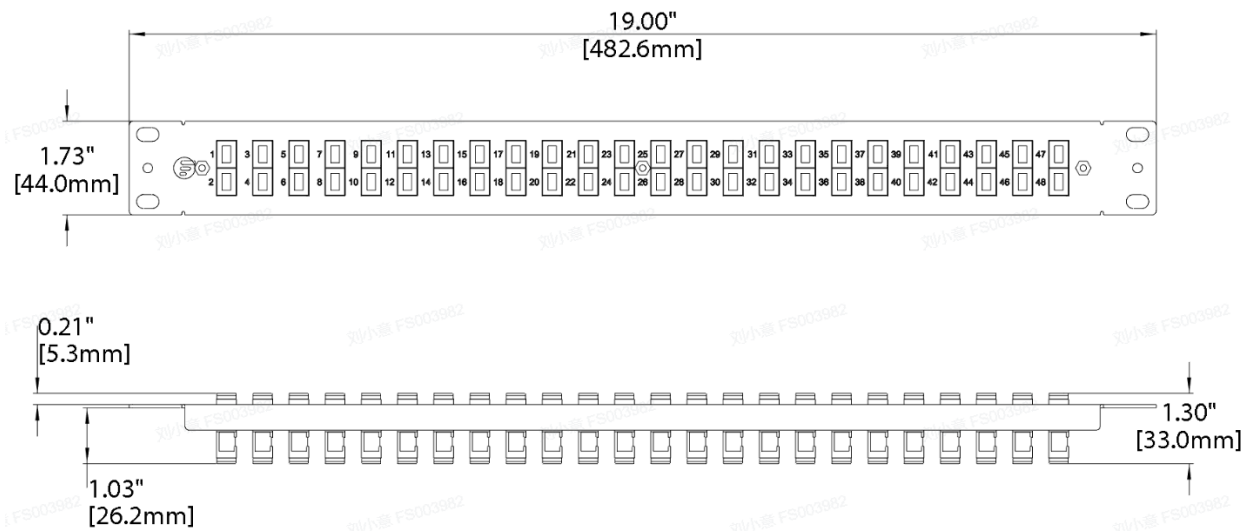
• LC Fiber Patch Panel



Note:

48F and 96F LC fiber patch panels are of the same dimensions.

• SC Fiber Patch Panel



Dimensions are in inches. (Dimensions in parentheses are in millimeters).

Ordering Information

Part Number	ID No.	Fiber Count	Fiber Mode	Polish Type	Adapter Color
FHU-FPP48FLCSMF	35530	48F	OS2	UPC	Blue
FHU-FPP48FLC10GMM	35531	48F	OM3, OM4	UPC	Aqua
FHU-FPP96FLCHSMF	69081	96F	OS2	UPC	Blue
FHU-FPP96FLCH10GMM	69082	96F	OM3, OM4	UPC	Aqua
FHU-FPP48FSCSMF	35529	48F	OS2	UPC	Blue
FHU-FPP24SCADXSMF	170303	48F	OS2	APC	Green
FHU-FPP48FSC10GMM	173304	48F	OM4	UPC	Aqua

Matching Products

ID	Description
#70993	45U GF2-Series 2-Post Open Frame Rack
#70771	45U GF4-Series 4-Post Adjustable Open Frame Rack
#59566	1U L-Shaped Horizontal Cable Lacer Bar with Angled 4" Offset, 5pcs/pack
#72911	1U Metal Horizontal Lacer Panel with 5 Rotating and Detachable Plastic D-rings
#72166	1m (3ft) LC UPC to LC UPC Flat Clip Uniboot Duplex OS2 Single Mode PVC (OFNR) 2.0mm BIF Cable
#68294	1m (3ft) Grade B LC UPC to LC UPC Duplex PVC (OFNR) OS2 Single Mode BIF Fiber Patch Cable
#72170	1m (3ft) LC UPC to LC UPC Flat Clip Uniboot Duplex OM4 Multimode PVC (OFNR) 2.0mm BIF Fiber Cable
#68299	1m (3ft) LC UPC to LC UPC Duplex OM4 Multimode Elite BIF Fiber Patch Cable